

THE MEDICAL PRACTICE AT 48 WIMPOLE STREET

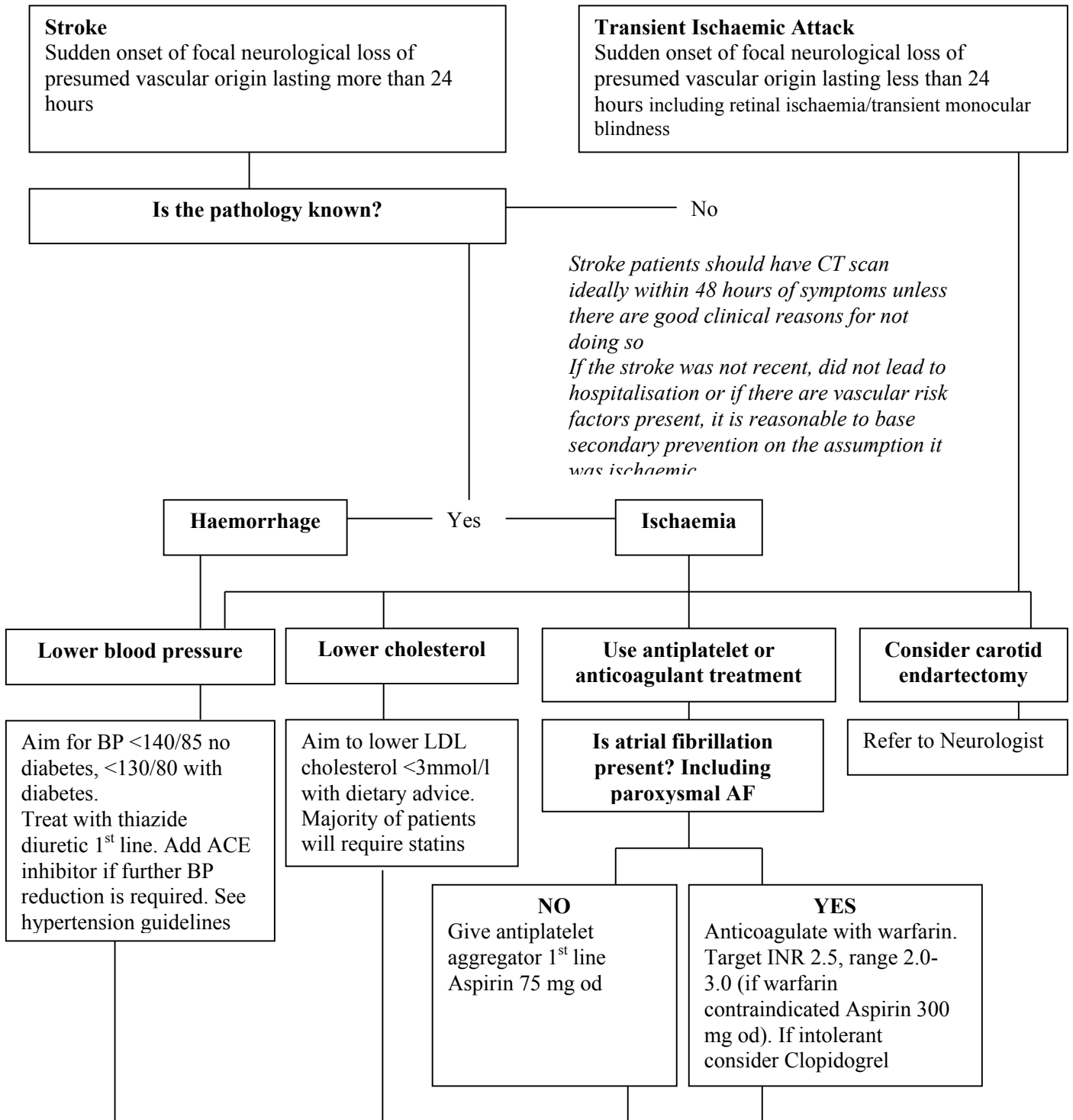
48 WIMPOLE STREET LONDON W1G 8SF

TEL: 020 7935 4357 • 020 7486 7876

FAX: 020 7224 0625

wimpole48@btconnect.com

PRACTICE GUIDELINES FOR MANAGEMENT OF TIA & STROKE



Lifestyle assessment & advice re: diet – balance of good health, weight reduction, alcohol limits, moderate exercises & smoking cessation with written advice.
Consider referral to Smoking Cessation & NRT/Zyban prescription, Active Lifestyles, Dietician.
Family & Carer support – Carers Support Service, Stroke Association contact no: 020 7490 7999
Record on Practice Stroke/TIA register

Continue to monitor patient at appropriate levels. Establish and maintain recall system.