

# THE MEDICAL PRACTICE AT 48 WIMPOLE STREET

DR C.N. SAWYER MRCP DFOM DR S. KHALIQUE MRCPG DRCOG

48 WIMPOLE STREET LONDON W1G 8SF

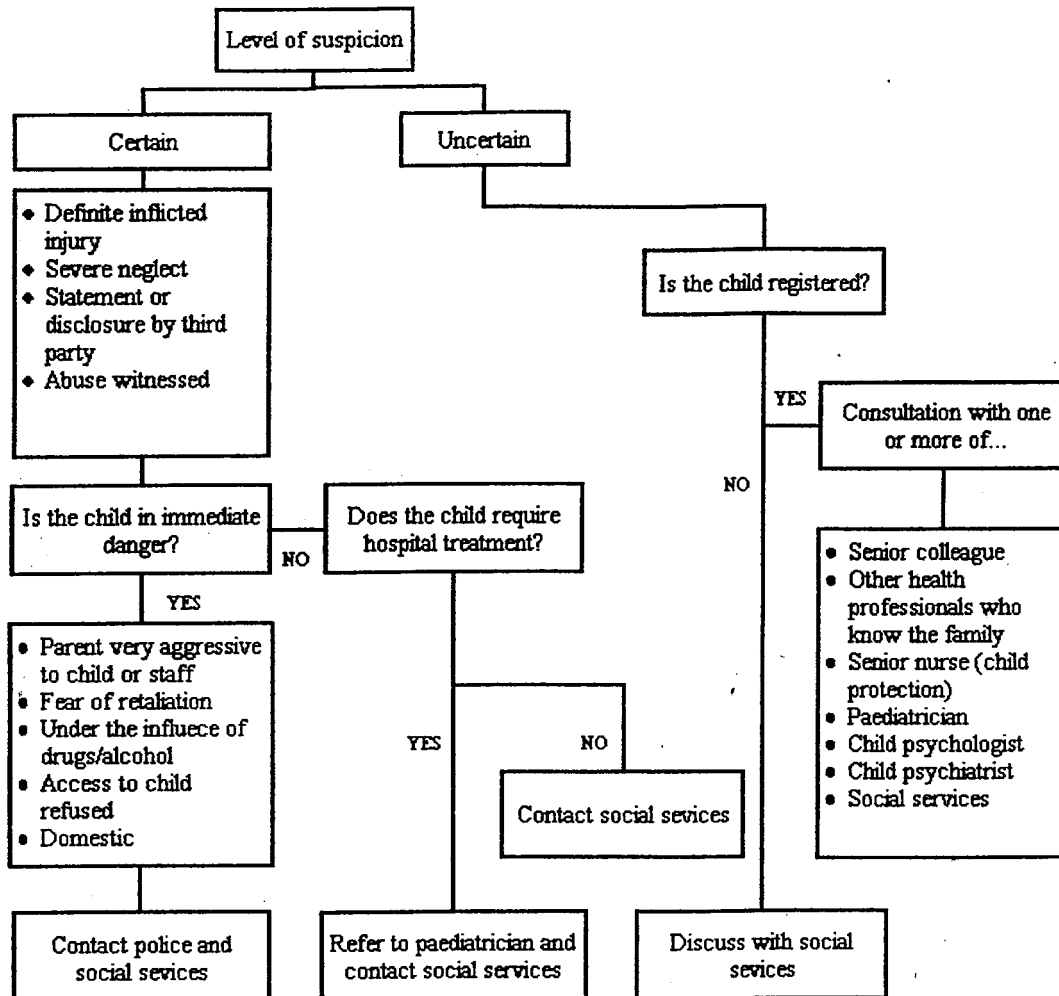
020 7935 4357 020 7486 7876

FAX: 020 7224 0625 [www.48wimpole.co.uk](http://www.48wimpole.co.uk) [admin@48wimpole.co.uk](mailto:admin@48wimpole.co.uk)

## PRACTICE POLICY FOR CHILD PROTECTION

### Suspicion of Child Abuse

Does the injury fit the history?



Paediatrician = Duty Paediatric Registrar @ St Mary's /Chelsea & Westminster  
Social Services = Westminster City Council, Children & Families team  
North: 020 7641 7524  
South: 020 7641 3906

### Sources of Stress for Children

- Social exclusion
- Domestic violence
- Mental illness of parent/carer
- Drug and alcohol misuse

### Reference sources

- <http://www.safeguardingchildren.org.uk/Safeguarding-Children/2008-report>
- [http://www.bma.org.uk/images/childprotectiontoolkitmay2009\\_tcm41-184943.pdf](http://www.bma.org.uk/images/childprotectiontoolkitmay2009_tcm41-184943.pdf)
- [http://www.rcgp.org.uk/PDF/CIRC\\_Full%20Toolkit.pdf](http://www.rcgp.org.uk/PDF/CIRC_Full%20Toolkit.pdf)